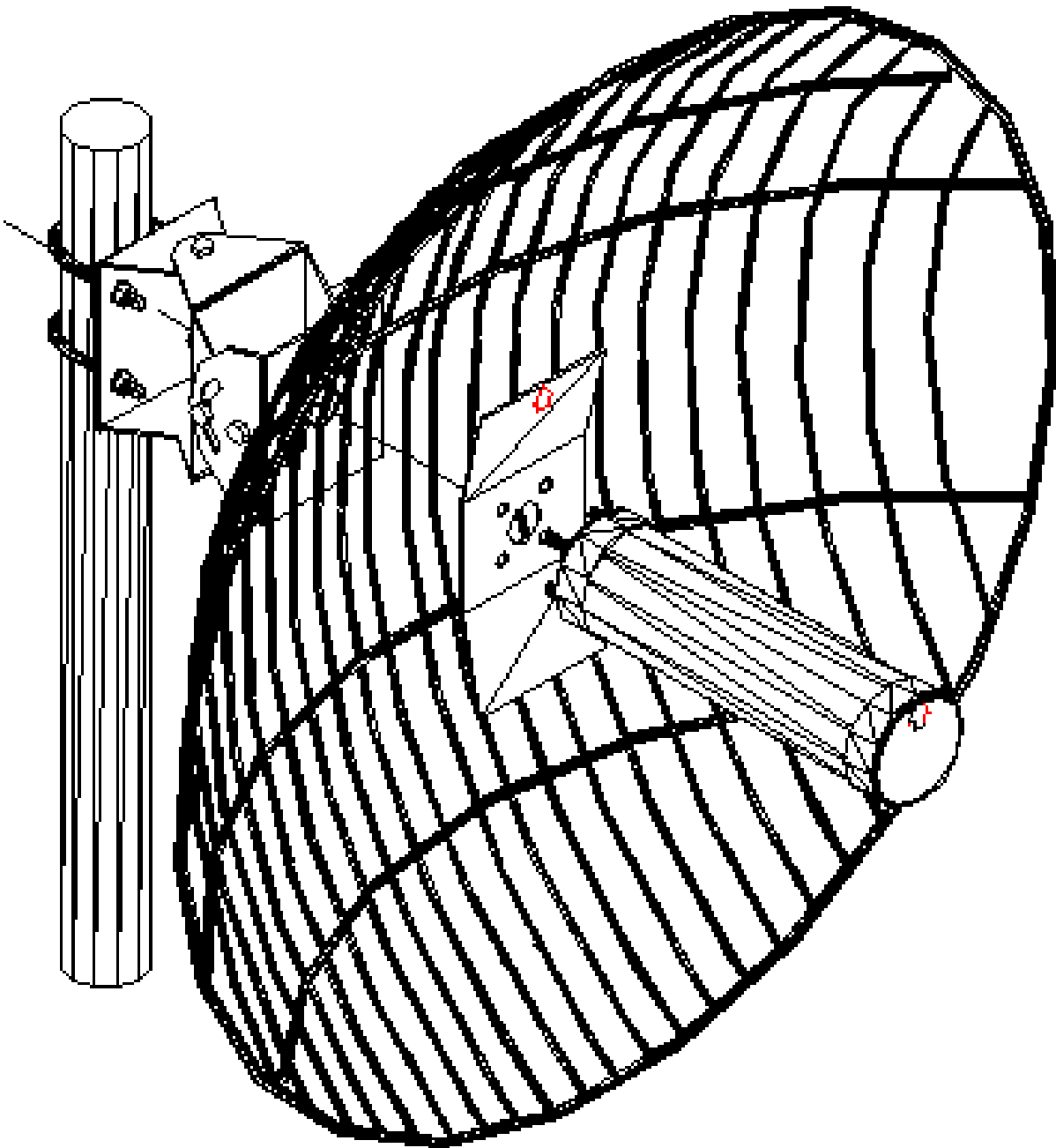


2.4GHz RF HI-GAIN ANTENNA

ITEM NO : 1CO-24008A



※ SPECIFICATION

- Frequency: 2400~2500 MHz
- Max gain: 24 dBi
- Connector: N female
- Max input power: 25W Max
- Wave impedance: 50 OHMS $\pm 5 \Omega$
- Dimensions: $\varphi 900 \times 370 \text{mm}$
- Weight: 4.21 kg
- For Image/Data/Voice communications and Wireless LAN system