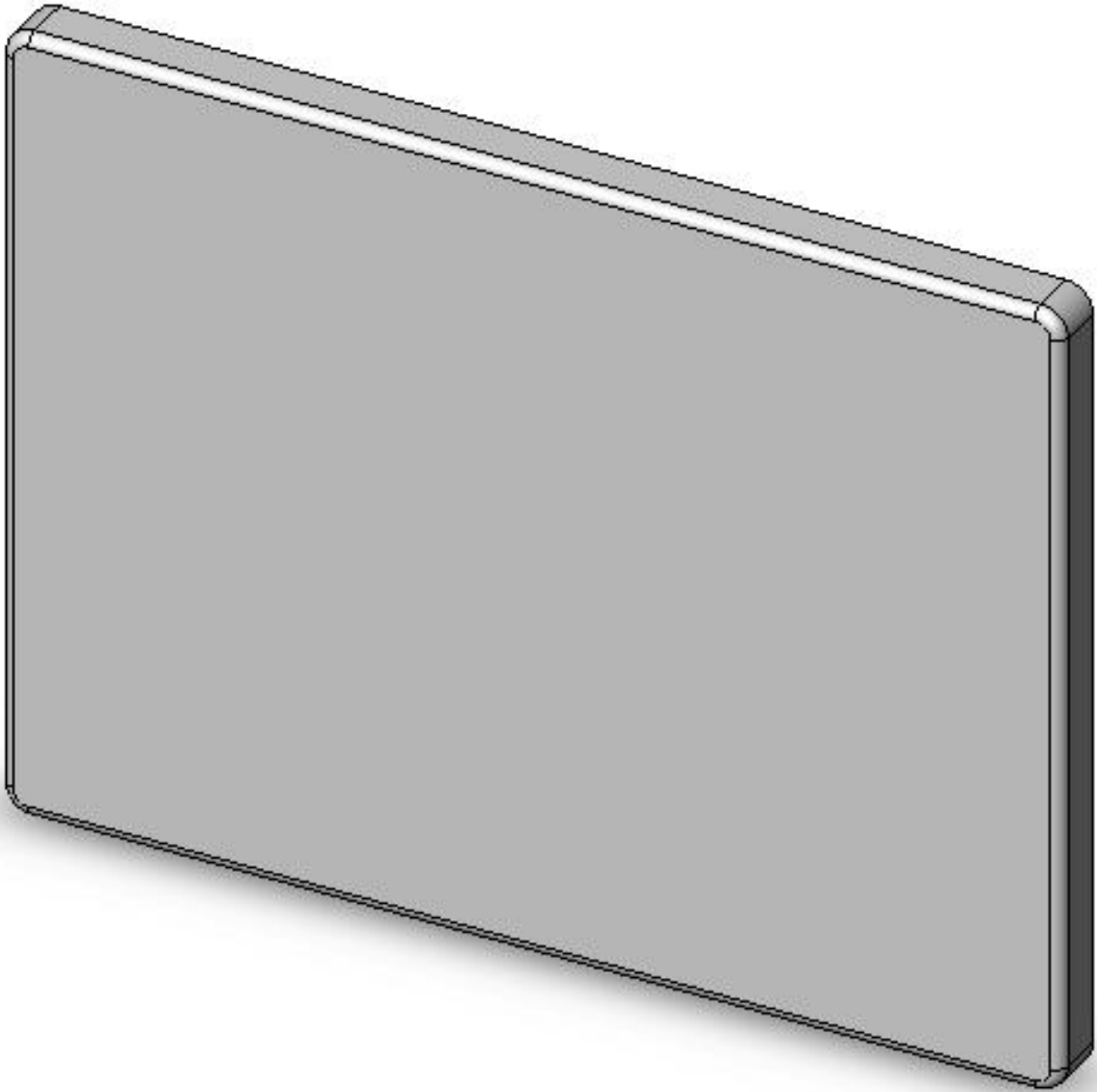


2.5~2.7GHz RF HI-GAIN ANTENNA

ITEM No : 1PG-2616



SPECIFICATION

- **Frequency : 2500~2700 MHz**
- **Max gain : 16dBi**
- **Connector : N female**
- **Max input power : 10W Max**
- **Wave impedance : 50 OHMS \pm 5**
- **Dimensions : 270x205x15mm**
- **Weight : 1000g \pm 10**
- **For image/Data/Voice communication and Wireless LAN system**

ITEM NO:1PG-2616

