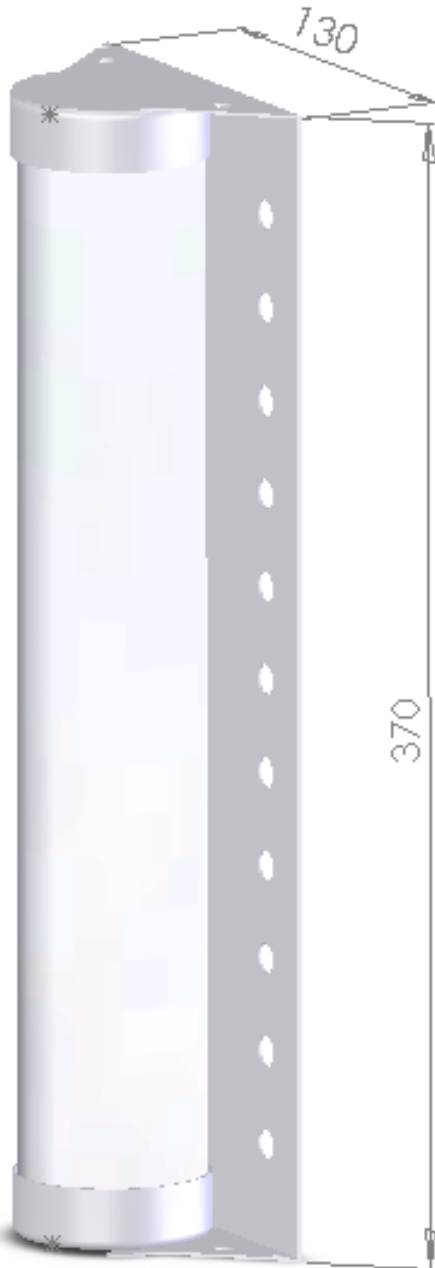


## 4.9GHz RF HI-GAIN ANTENNA

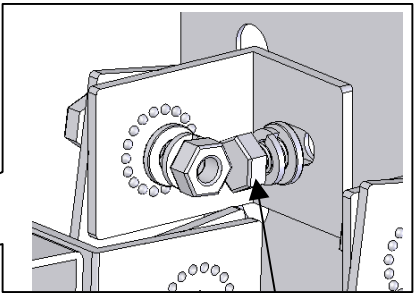
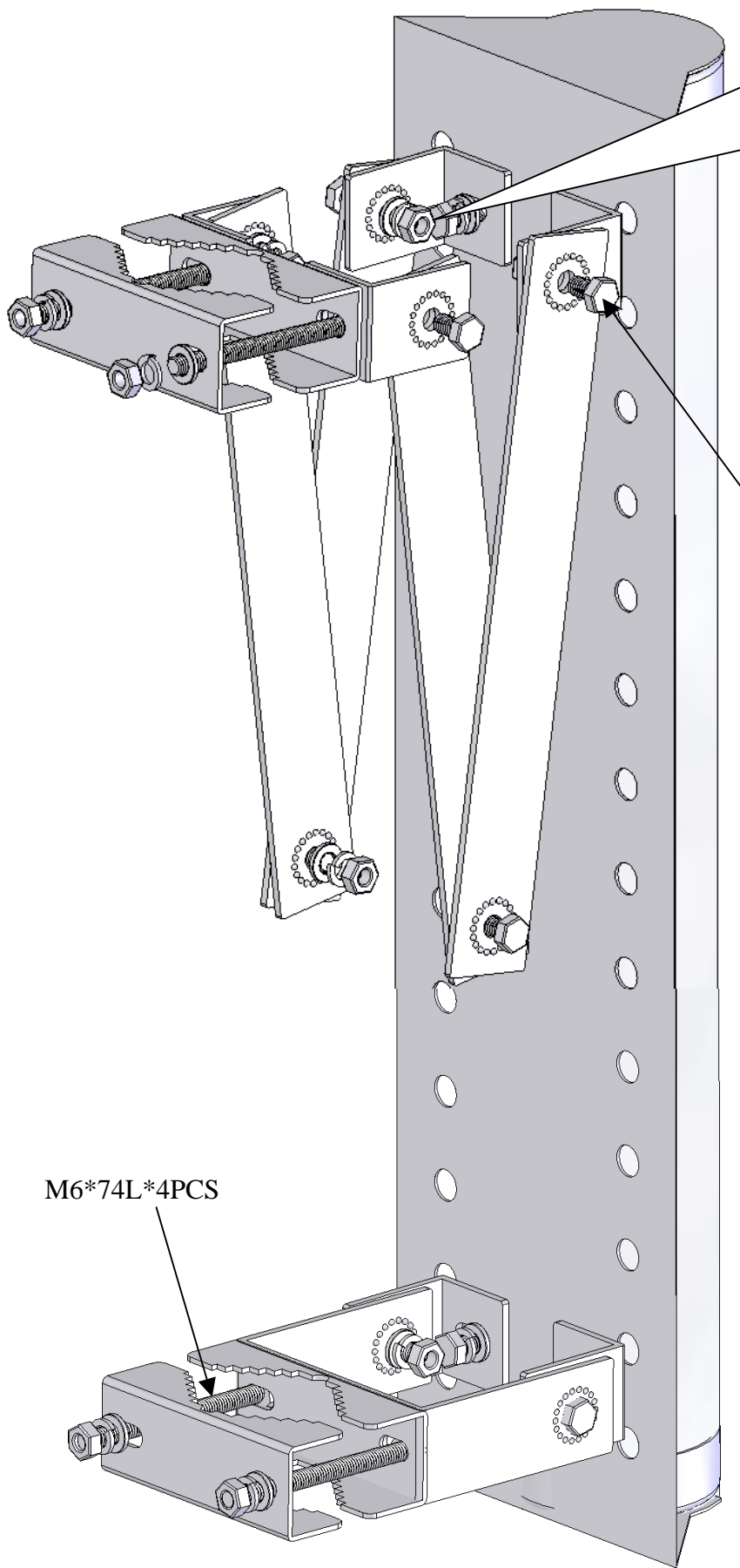
ITEM NO : 1SC-4915



### ※SPECIFICATION

- Frequency: 4800~5000 MHz
  - Max gain: 15 dBi
  - Connector: N female
  - Max input power: 30W
  - Wave impedance: 50 ohm
  - Dimensions: L370Xw130mm
  - Weight: 2.4 kg
- 
- For Image/Data/Voice communications and Wireless LAN system

§ 背板支架組裝示意圖



M6\*12L\*4PCS

M6\*15L\*8PCS

M6\*74L\*4PCS